



SEBO TESTING
Technical Services
International Compliance Management

Ref NO.: STT/15T1036-RoHS

Test Report

Report reference No.: STT/15T1036-RoHS

Applicant: Watchful Eye Solutions, Inc.

Address: 24E Hudson View Dr., Beacon, NY 12508, USA

Product Description: Surge Protective Device

Model: WTH-SG/RJ45, WTH-SG, WTH-GR, WTH-CS

Test Model: WTH-SG/RJ45

Test Directive: 2011/65/EU

Test Date: Apr 13, 2015 – May 12, 2015

Issuance Date: May 12, 2015

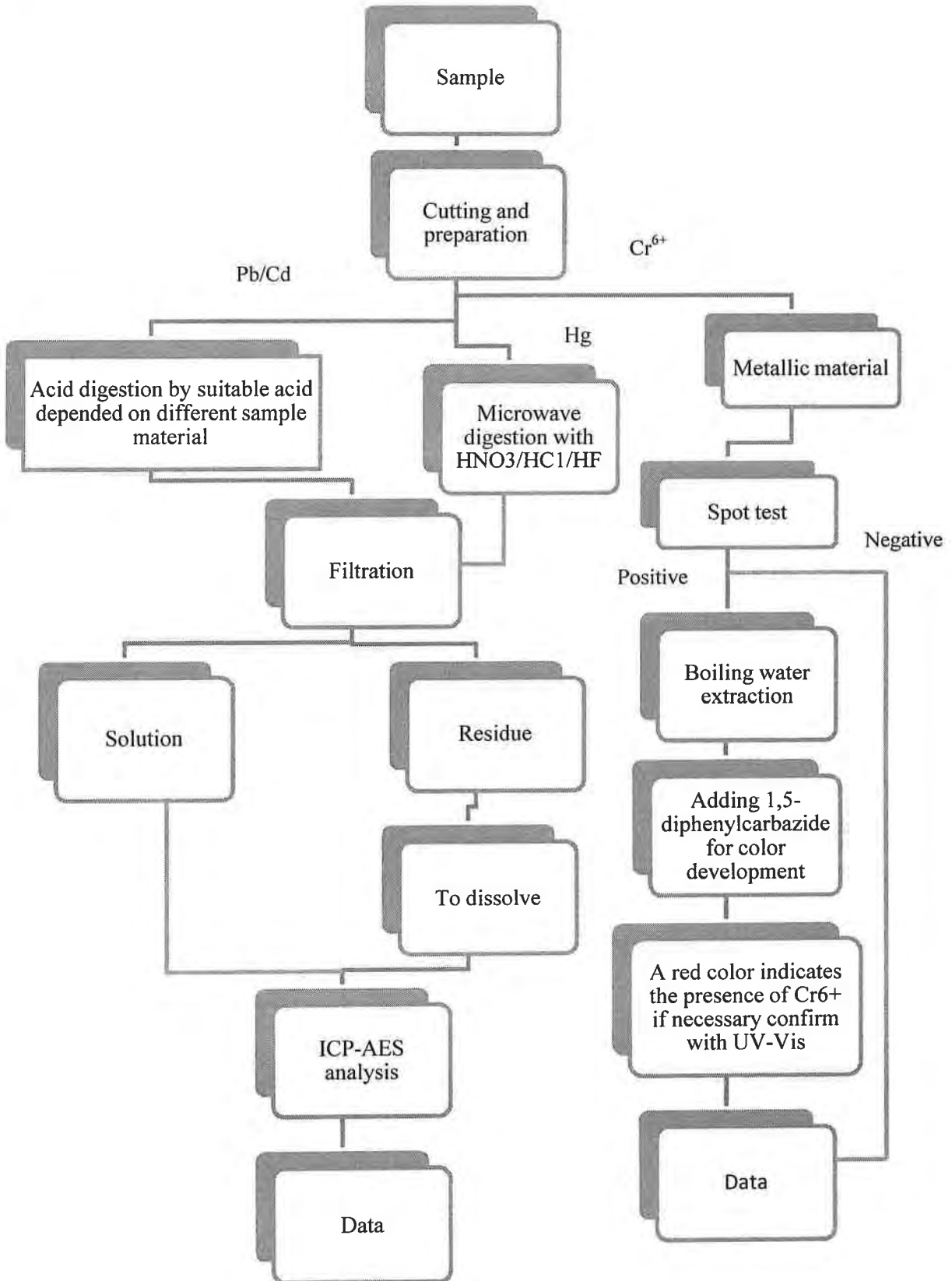
Tested By:  Smish Chen- Engineer

Reviewed By:  Dennis Zhang -Engineer Manager

SHANGHAI SEBO EQUIPMENT TESTING & TECHNICAL CO., LTD
2-201 LANE 58, EAST XINJIAN RD., MINHANG DISTRICT, SHANGHAI CITY
TEL: +86-21-64138258 64138296; FAX: +86-21-64137308
E-Mail: service@shengou.com.cn



Test Flow Chart for the determination of Pb, Cd, Hg, Cr⁶⁺





Test Flow Chart for the determination of PBB/PBDE





Test Component(s):

No.	Sample Serial No.	Test Component(s)
1	TS20150229001	Plastic shell
2	TS20150229002	Terminal
3	TS20150229003	Green plastic
4	TS20150229004	Metal 1#
5	TR20151345001	Metal 2#
6	TS20150229006	Metal3#
7	TS20150229007	Metal 4#
8	TS20150229008	Metal 5#
9	TS20150229009	Metal 6#
10	TR20151345002	Tin solder
11	TS20150229011	PCB board
12	TS20150229012	Black plastic on PCB board 1#
13	TS20150229013	Black plastic on PCB board 2#
14	TS20150229014	Resistance on PCB board
15	TR20151345003	Black plastic

The detailed components refer to the appendix photos.



RoHS Directive 2011/65/EU

Test Method: Pb, Cd : IEC 62321-5:2013; Hg: IEC 62321-4:2013; Cr6+, PBBs, PBDEs: IEC 62321:2008

Test Result(s):

Test Item(s)	Limit	MDL	Unit	Test Result(s)			
				1	2	3	11
Lead(Pb)	1000	5	mg/kg	N.D.	N.D.	N.D.	N.D.
Mercury(Hg)	1000	5	mg/kg	N.D.	N.D.	N.D.	N.D.
Hexavalent Chromium(Cr ⁶⁺)	1000	5	mg/kg	N.D.	N.D.	N.D.	N.D.
Cadmium(Cd)	100	5	mg/kg	N.D.	N.D.	N.D.	N.D.
Sum of Polybrominated Biphenyls(PBBs)	1000	<u>100</u>	mg/kg	N.D.	N.D.	N.D.	N.D.
Monobromobiphenyl		10	mg/kg	N.D.	N.D.	N.D.	N.D.
Dibromobiphenyl		10	mg/kg	N.D.	N.D.	N.D.	N.D.
Tribromobiphenyl		10	mg/kg	N.D.	N.D.	N.D.	N.D.
Tetrabromobiphenyl		10	mg/kg	N.D.	N.D.	N.D.	N.D.
Pentabromobiphenyl		10	mg/kg	N.D.	N.D.	N.D.	N.D.
Hexabromobiphenyl		10	mg/kg	N.D.	N.D.	N.D.	N.D.
Heptabromobiphenyl		10	mg/kg	N.D.	N.D.	N.D.	N.D.
Octabromobiphenyl		10	mg/kg	N.D.	N.D.	N.D.	N.D.
Nonabromobiphenyl		10	mg/kg	N.D.	N.D.	N.D.	N.D.
Decabromobiphenyl		10	mg/kg	N.D.	N.D.	N.D.	N.D.
Sum of Polybrominated Diphenylethers (PBDEs)	1000	<u>100</u>	mg/kg	N.D.	N.D.	N.D.	N.D.
Monobromodiphenyl ether		10	mg/kg	N.D.	N.D.	N.D.	N.D.
Dibromodiphenyl ether		10	mg/kg	N.D.	N.D.	N.D.	N.D.
Tribromodiphenyl ether		10	mg/kg	N.D.	N.D.	N.D.	N.D.
Tetrabromodiphenyl ether		10	mg/kg	N.D.	N.D.	N.D.	N.D.
Pentabromodiphenyl ether		10	mg/kg	N.D.	N.D.	N.D.	N.D.
Hexabromodiphenyl ether		10	mg/kg	N.D.	N.D.	N.D.	N.D.
Heptabromodiphenyl ether		10	mg/kg	N.D.	N.D.	N.D.	N.D.
Octabromodiphenyl ether		10	mg/kg	N.D.	N.D.	N.D.	N.D.
Nonabromodiphenyl ether		10	mg/kg	N.D.	N.D.	N.D.	N.D.
Decabromodiphenyl ether		10	mg/kg	N.D.	N.D.	N.D.	N.D.

Remark:

1. MDL = Method Detection Limit; N.D. = Not detected (<MDL)



RoHS Directive 2011/65/EU

Test Method: Pb, Cd : IEC 62321-5:2013; Hg: IEC 62321-4:2013; Cr6+, PBBs, PBDEs: IEC 62321:2008

Test Result(s):

Test Item(s)	Limit	MDL	Unit	Test Result(s)			
				12	13	14	15
Lead(Pb)	1000	5	mg/kg	N.D.	378	N.D.	N.D.
Mercury(Hg)	1000	5	mg/kg	N.D.	N.D.	N.D.	N.D.
Hexavalent Chromium(Cr ⁶⁺)	1000	5	mg/kg	N.D.	N.D.	N.D.	N.D.
Cadmium(Cd)	100	5	mg/kg	N.D.	N.D.	N.D.	N.D.
Sum of Polybrominated Biphenyls(PBBs)	1000	<u>100</u>	mg/kg	N.D.	N.D.	N.D.	N.D.
Monobromobiphenyl		10	mg/kg	N.D.	N.D.	N.D.	N.D.
Dibromobiphenyl		10	mg/kg	N.D.	N.D.	N.D.	N.D.
Tribromobiphenyl		10	mg/kg	N.D.	N.D.	N.D.	N.D.
Tetrabromobiphenyl		10	mg/kg	N.D.	N.D.	N.D.	N.D.
Pentabromobiphenyl		10	mg/kg	N.D.	N.D.	N.D.	N.D.
Hexabromobiphenyl		10	mg/kg	N.D.	N.D.	N.D.	N.D.
Heptabromobiphenyl		10	mg/kg	N.D.	N.D.	N.D.	N.D.
Octabromobiphenyl		10	mg/kg	N.D.	N.D.	N.D.	N.D.
Nonabromobiphenyl		10	mg/kg	N.D.	N.D.	N.D.	N.D.
Decabromobiphenyl		10	mg/kg	N.D.	N.D.	N.D.	N.D.
Sum of Polybrominated Diphenylethers (PBDEs)	1000	<u>100</u>	mg/kg	N.D.	N.D.	N.D.	N.D.
Monobromodiphenyl ether		10	mg/kg	N.D.	N.D.	N.D.	N.D.
Dibromodiphenyl ether		10	mg/kg	N.D.	N.D.	N.D.	N.D.
Tribromodiphenyl ether		10	mg/kg	N.D.	N.D.	N.D.	N.D.
Tetrabromodiphenyl ether		10	mg/kg	N.D.	N.D.	N.D.	N.D.
Pentabromodiphenyl ether		10	mg/kg	N.D.	N.D.	N.D.	N.D.
Hexabromodiphenyl ether		10	mg/kg	N.D.	N.D.	N.D.	N.D.
Heptabromodiphenyl ether		10	mg/kg	N.D.	N.D.	N.D.	N.D.
Octabromodiphenyl ether		10	mg/kg	N.D.	N.D.	N.D.	N.D.
Nonabromodiphenyl ether		10	mg/kg	N.D.	N.D.	N.D.	N.D.
Decabromodiphenyl ether		10	mg/kg	N.D.	N.D.	N.D.	N.D.

Remark:

2. MDL = Method Detection Limit; N.D. = Not detected (<MDL)



RoHS Directive 2011/65/EU

Test Method: Pb, Cd : IEC 62321-5:2013; Hg: IEC 62321-4:2013; Cr6+: IEC 62321:2008

Test Result(s):

Test Item(s)	Limit	MDL	Unit	Test Result(s)			
				4	5	6	7
Lead(Pb)	1000	5	mg/kg	102	11400*	N.D.	N.D.
Mercury(Hg)	1000	5	mg/kg	N.D.	N.D.	N.D.	N.D.
Hexavalent Chromium(Cr ⁶⁺)	--	--	--	Negative	Negative	Negative	Negative
Cadmium(Cd)	100	5	mg/kg	N.D.	N.D.	N.D.	N.D.

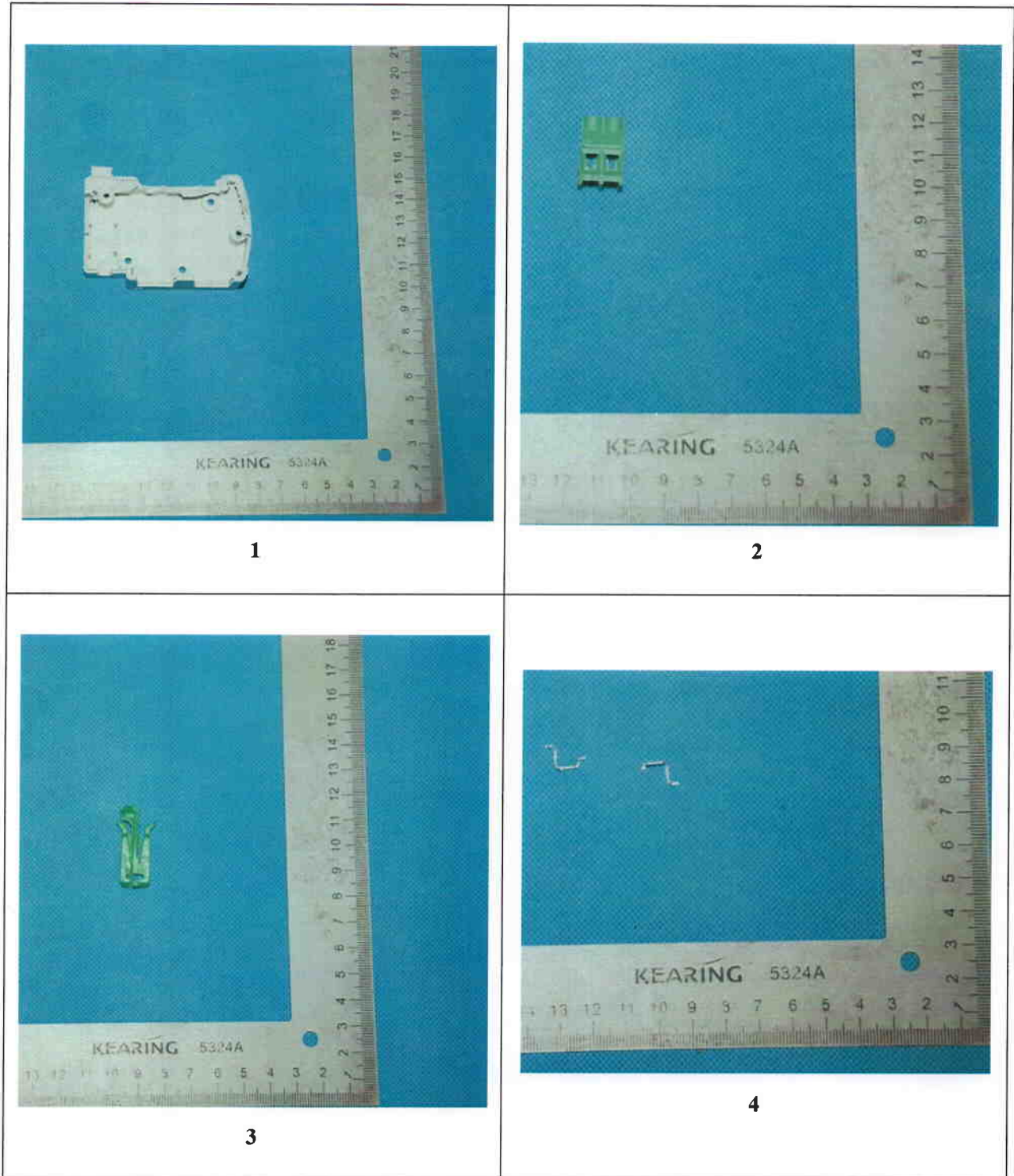
Test Item(s)	Limit	MDL	Unit	Test Result(s)		
				8	9	10
Lead(Pb)	1000	5	mg/kg	N.D.	N.D.	N.D.
Mercury(Hg)	1000	5	mg/kg	N.D.	N.D.	N.D.
Hexavalent Chromium(Cr ⁶⁺)	--	--	--	Negative	Negative	Negative
Cadmium(Cd)	100	5	mg/kg	N.D.	N.D.	N.D.

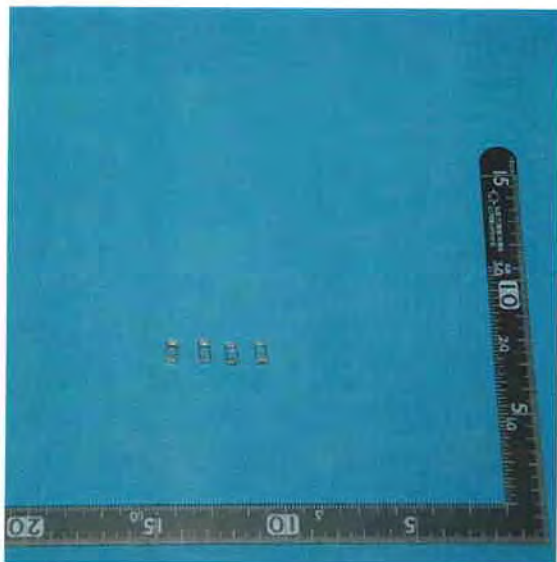
Remarks:

1. MDL = Method Detection Limit; N.D. = Not detected (<MDL)
2. Negative: Cr6+<0.02mg/L; Positive: Cr6+>0.02mg/L
3. *: As a copper alloy containing up to 4% lead by weight (RoHS Exemption 6(c)).

Appendix

PRODUCT PICTURE

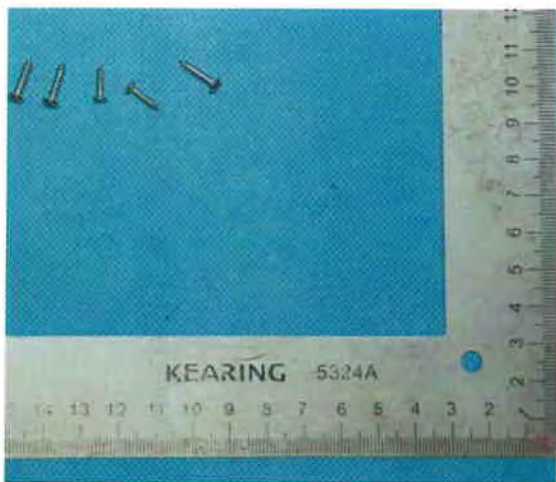




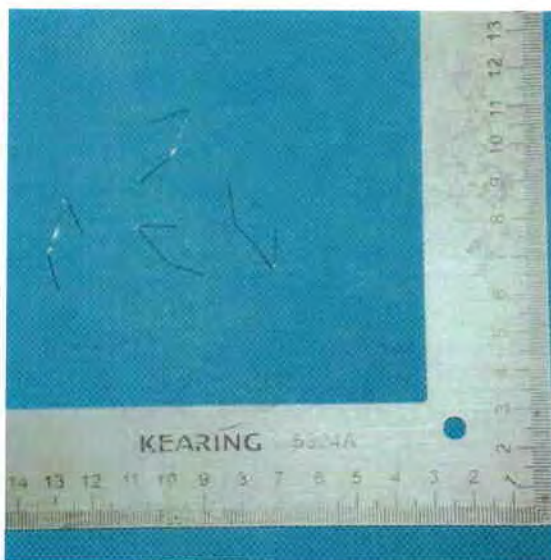
5



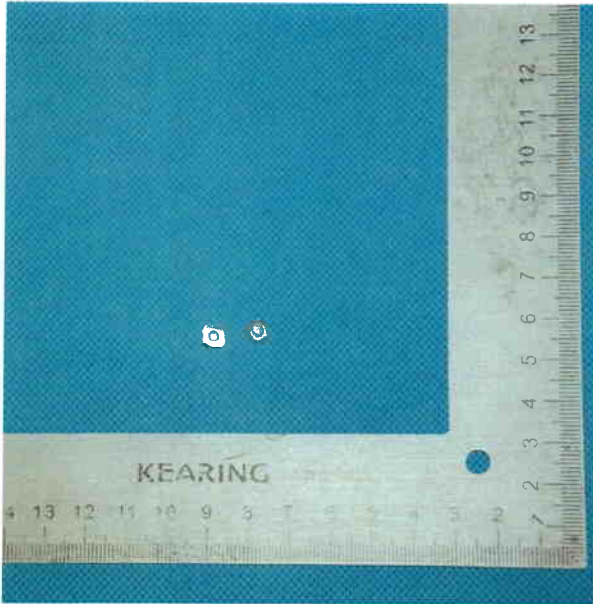
6



7



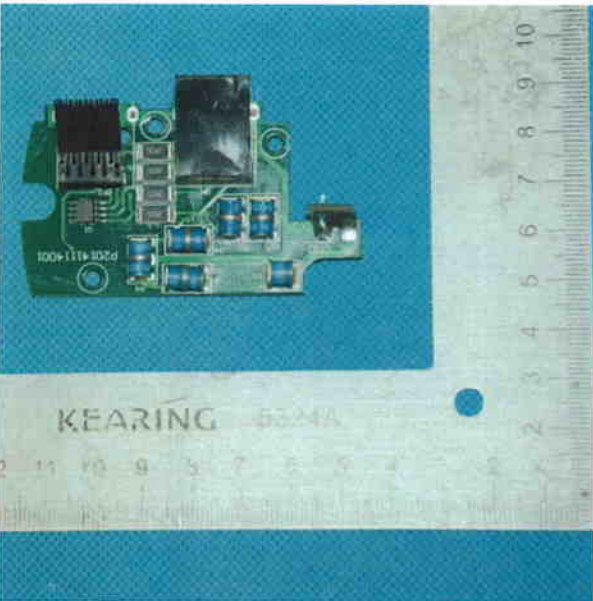
8



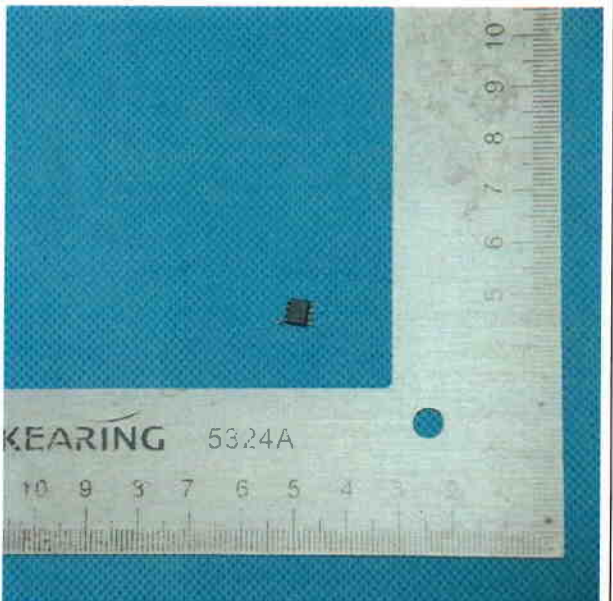
9



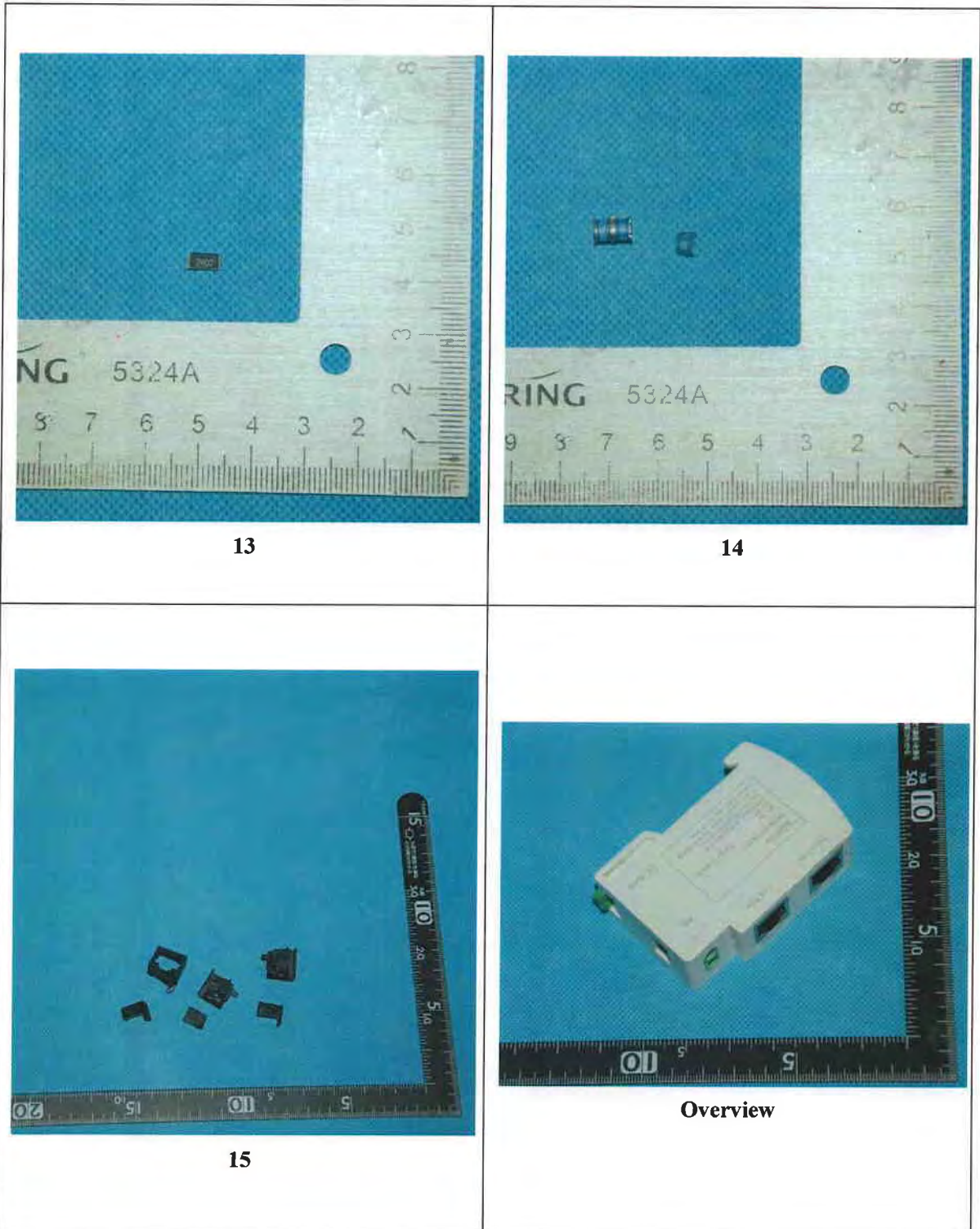
10



11



12



13

14

15

Overview

-----THIS IS THE END OF TEST REPORT-----