



SEBO TESTING
Technical Services
International Compliance Management

Ref NO.: STT/15T1037-RoHS

Test Report

Report reference No.: STT/15T1037-RoHS

Applicant: Watchful Eye Solutions, Inc.

Address: 24E Hudson View Dr., Beacon, NY 12508, USA

Product Description: Surge Protective Device

Model: WTH-10, WTH-20, WTH-40, WTH-50, WTH-65, WTH-80,
WTH-100, WTH-120, WTH-165, WTH-300, WTH-500

Test Model: WTH-40

Test Directive: 2011/65/EU

Test Date: Apr 13, 2015 – May 12, 2015

Issuance Date: May 12, 2015

Tested By: *Smish Chen* Smish Chen- Engineer

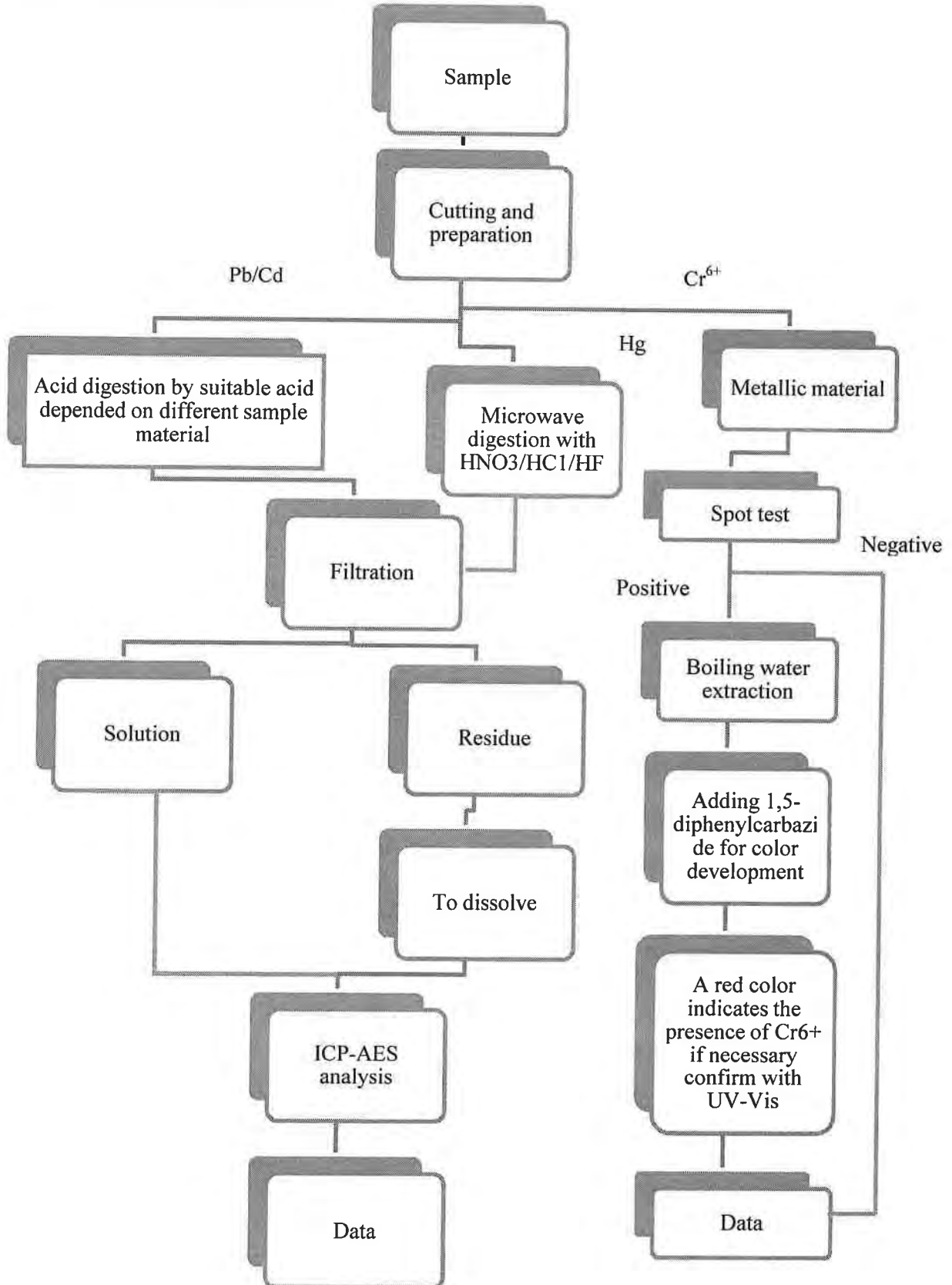
Reviewed By: *Dennis Zhang* Dennis Zhang -Engineer Manager



SHANGHAI SEBO EQUIPMENT TESTING & TECHNICAL CO., LTD
2-201 LANE 58, EAST XINJIAN RD., MINHANG DISTRICT, SHANGHAI CITY
TEL: +86-21-64138258 64138296; FAX: +86-21-64137308
E-Mail: service@shengou.com.cn

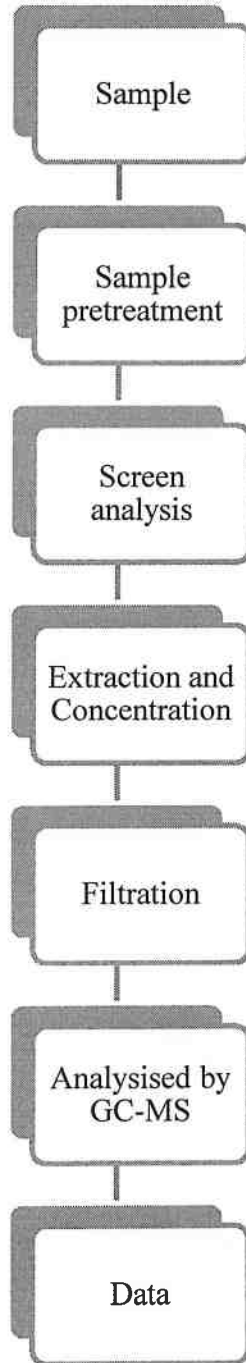


Test Flow Chart for the determination of Pb, Cd, Hg, Cr⁶⁺





Test Flow Chart for the determination of PBB/PBDE





Test Component(s):

No.	Sample Serial No.	Test Component(s)
1	TS20150230001	Metal 1#
2	TS20150230002	Metal 2#
3	TS20150230003	Metal 3#
4	TS20150230004	Copper wire
5	TS20150230006	Black plastic 1#
6	TS20150230008	White plastic 2#
7	TS20150230009	Black plastic 1#
8	TS20150230010	Green plastic 1#
9	TR20151345004	Metal needle
10	TS20150230012	Metal 4#
11	TS20150230013	Blue coating
12	TS20150230014	Inner non metal
13	TS20150229001	Plastic shell
14	TS20150229002	Terminal
15	TS20150229003	Green plastic 2#

Remark: As per client's request, the test results of components 13-15 are quoted from test report STT/15T1036-RoHS.

The detailed components refer to the appendix photos.



RoHS Directive 2011/65/EU

Test Method: Pb, Cd : IEC 62321-5:2013; Hg: IEC 62321-4:2013; Cr6+, PBBs, PBDEs: IEC 62321:2008

Test Result(s):

Test Item(s)	Limit	MDL	Unit	Test Result(s)				
				5	6	7	8	11
Lead(Pb)	1000	5	mg/kg	N.D.	42	26	N.D.	N.D.
Mercury(Hg)	1000	5	mg/kg	N.D.	N.D.	N.D.	N.D.	N.D.
Hexavalent Chromium(Cr ⁶⁺)	1000	5	mg/kg	N.D.	N.D.	N.D.	N.D.	N.D.
Cadmium(Cd)	100	5	mg/kg	N.D.	N.D.	N.D.	N.D.	N.D.
Sum of Polybrominated Biphenyls(PBBs)	1000	<u>100</u>	mg/kg	N.D.	N.D.	N.D.	N.D.	N.D.
Monobromobiphenyl		10	mg/kg	N.D.	N.D.	N.D.	N.D.	N.D.
Dibromobiphenyl		10	mg/kg	N.D.	N.D.	N.D.	N.D.	N.D.
Tribromobiphenyl		10	mg/kg	N.D.	N.D.	N.D.	N.D.	N.D.
Tetrabromobiphenyl		10	mg/kg	N.D.	N.D.	N.D.	N.D.	N.D.
Pentabromobiphenyl		10	mg/kg	N.D.	N.D.	N.D.	N.D.	N.D.
Hexabromobiphenyl		10	mg/kg	N.D.	N.D.	N.D.	N.D.	N.D.
Heptabromobiphenyl		10	mg/kg	N.D.	N.D.	N.D.	N.D.	N.D.
Octabromobiphenyl		10	mg/kg	N.D.	N.D.	N.D.	N.D.	N.D.
Nonabromobiphenyl		10	mg/kg	N.D.	N.D.	N.D.	N.D.	N.D.
Decabromobiphenyl		10	mg/kg	N.D.	N.D.	N.D.	N.D.	N.D.
Sum of Polybrominated Diphenylethers (PBDEs)	1000	<u>100</u>	mg/kg	N.D.	N.D.	N.D.	N.D.	N.D.
Monobromodiphenyl ether		10	mg/kg	N.D.	N.D.	N.D.	N.D.	N.D.
Dibromodiphenyl ether		10	mg/kg	N.D.	N.D.	N.D.	N.D.	N.D.
Tribromodiphenyl ether		10	mg/kg	N.D.	N.D.	N.D.	N.D.	N.D.
Tetrabromodiphenyl ether		10	mg/kg	N.D.	N.D.	N.D.	N.D.	N.D.
Pentabromodiphenyl ether		10	mg/kg	N.D.	N.D.	N.D.	N.D.	N.D.
Hexabromodiphenyl ether		10	mg/kg	N.D.	N.D.	N.D.	N.D.	N.D.
Heptabromodiphenyl ether		10	mg/kg	N.D.	N.D.	N.D.	N.D.	N.D.
Octabromodiphenyl ether		10	mg/kg	N.D.	N.D.	N.D.	N.D.	N.D.
Nonabromodiphenyl ether		10	mg/kg	N.D.	N.D.	N.D.	N.D.	N.D.
Decabromodiphenyl ether		10	mg/kg	N.D.	N.D.	N.D.	N.D.	N.D.

Remark:

1. MDL = Method Detection Limit; N.D. = Not detected (<MDL)



RoHS Directive 2011/65/EU

Test Method: Pb, Cd : IEC 62321-5:2013; Hg: IEC 62321-4:2013; Cr6+, PBBs, PBDEs: IEC 62321:2008

Test Result(s):

Test Item(s)	Limit	MDL	Unit	Test Result(s)			
				12	13	14	15
Lead(Pb)	1000	5	mg/kg	N.D.	N.D.	N.D.	N.D.
Mercury(Hg)	1000	5	mg/kg	N.D.	N.D.	N.D.	N.D.
Hexavalent Chromium(Cr ⁶⁺)	1000	5	mg/kg	N.D.	N.D.	N.D.	N.D.
Cadmium(Cd)	100	5	mg/kg	N.D.	N.D.	N.D.	N.D.
Sum of Polybrominated Biphenyls(PBBs)	1000	<u>100</u>	mg/kg	N.D.	N.D.	N.D.	N.D.
Monobromobiphenyl		10	mg/kg	N.D.	N.D.	N.D.	N.D.
Dibromobiphenyl		10	mg/kg	N.D.	N.D.	N.D.	N.D.
Tribromobiphenyl		10	mg/kg	N.D.	N.D.	N.D.	N.D.
Tetrabromobiphenyl		10	mg/kg	N.D.	N.D.	N.D.	N.D.
Pentabromobiphenyl		10	mg/kg	N.D.	N.D.	N.D.	N.D.
Hexabromobiphenyl		10	mg/kg	N.D.	N.D.	N.D.	N.D.
Heptabromobiphenyl		10	mg/kg	N.D.	N.D.	N.D.	N.D.
Octabromobiphenyl		10	mg/kg	N.D.	N.D.	N.D.	N.D.
Nonabromobiphenyl		10	mg/kg	N.D.	N.D.	N.D.	N.D.
Decabromobiphenyl		10	mg/kg	N.D.	N.D.	N.D.	N.D.
Sum of Polybrominated Diphenylethers (PBDEs)	1000	<u>100</u>	mg/kg	N.D.	N.D.	N.D.	N.D.
Monobromodiphenyl ether		10	mg/kg	N.D.	N.D.	N.D.	N.D.
Dibromodiphenyl ether		10	mg/kg	N.D.	N.D.	N.D.	N.D.
Tribromodiphenyl ether		10	mg/kg	N.D.	N.D.	N.D.	N.D.
Tetrabromodiphenyl ether		10	mg/kg	N.D.	N.D.	N.D.	N.D.
Pentabromodiphenyl ether		10	mg/kg	N.D.	N.D.	N.D.	N.D.
Hexabromodiphenyl ether		10	mg/kg	N.D.	N.D.	N.D.	N.D.
Heptabromodiphenyl ether		10	mg/kg	N.D.	N.D.	N.D.	N.D.
Octabromodiphenyl ether		10	mg/kg	N.D.	N.D.	N.D.	N.D.
Nonabromodiphenyl ether		10	mg/kg	N.D.	N.D.	N.D.	N.D.
Decabromodiphenyl ether		10	mg/kg	N.D.	N.D.	N.D.	N.D.

Remark:

2. MDL = Method Detection Limit; N.D. = Not detected (<MDL)



RoHS Directive 2011/65/EU

Test Method: Pb, Cd : IEC 62321-5:2013; Hg: IEC 62321-4:2013; Cr6+: IEC 62321:2008

Test Result(s):

Test Item(s)	Limit	MDL	Unit	Test Result(s)		
				1	2	3
Lead(Pb)	1000	5	mg/kg	N.D.	N.D.	N.D.
Mercury(Hg)	1000	5	mg/kg	N.D.	N.D.	N.D.
Hexavalent Chromium(Cr ⁶⁺)	--	--	--	Negative	Negative	Negative
Cadmium(Cd)	100	5	mg/kg	N.D.	N.D.	N.D.

Test Item(s)	Limit	MDL	Unit	Test Result(s)		
				4	9	10
Lead(Pb)	1000	5	mg/kg	N.D.	N.D.	N.D.
Mercury(Hg)	1000	5	mg/kg	N.D.	N.D.	N.D.
Hexavalent Chromium(Cr ⁶⁺)	--	--	--	Negative	Negative	Negative
Cadmium(Cd)	100	5	mg/kg	N.D.	N.D.	N.D.

Remarks:

1. MDL = Method Detection Limit; N.D. = Not detected (<MDL)
2. Negative: Cr6+<0.02mg/L; Positive: Cr6+>0.02mg/L



Appendix

PRODUCT PICTURE



1



2



3



4



5



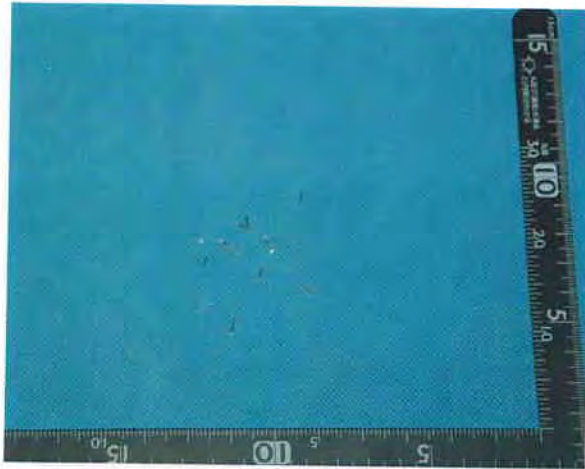
6



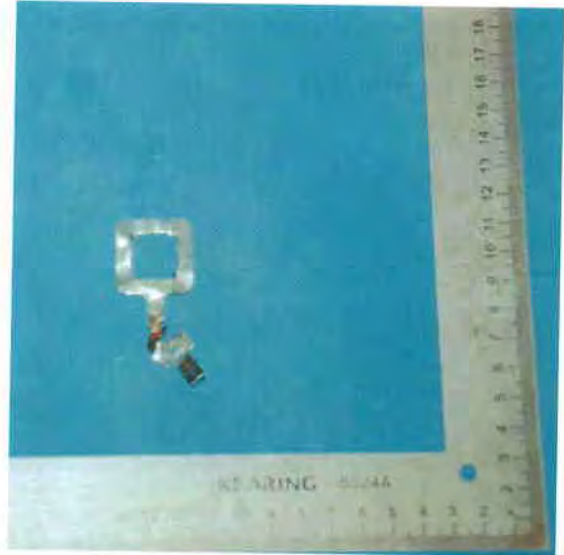
7



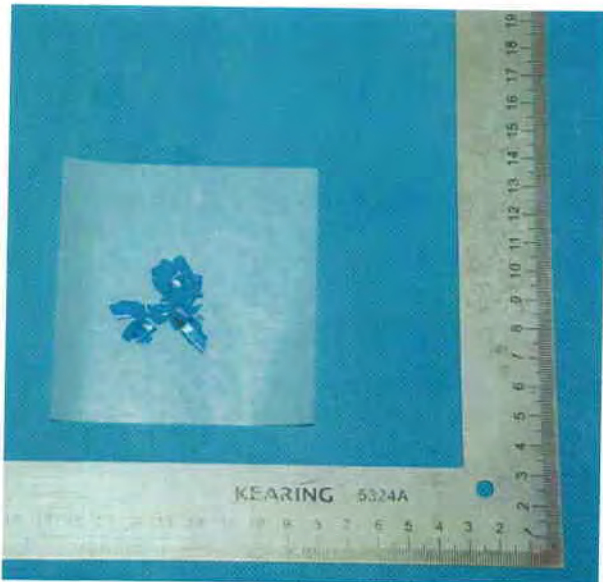
8



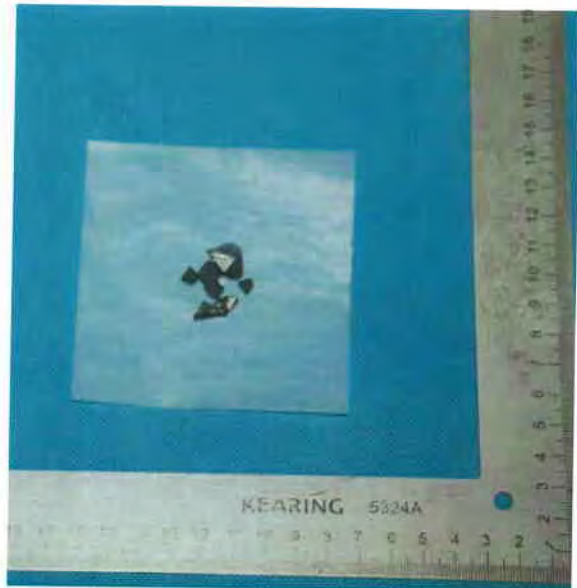
9



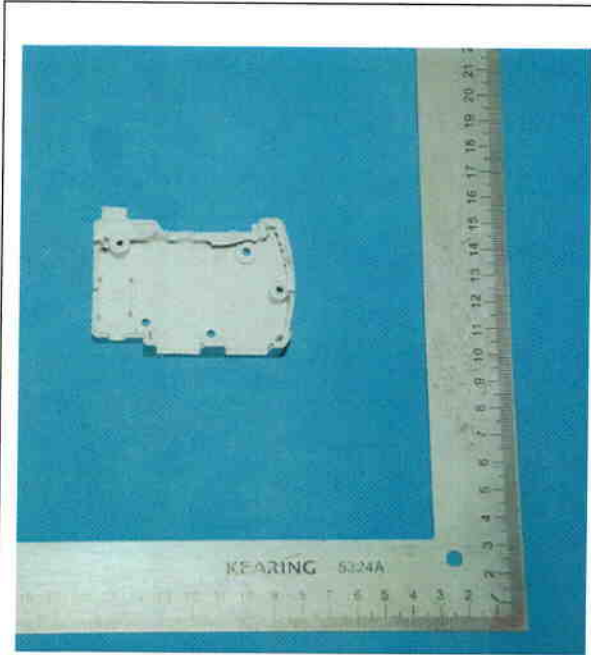
10



11



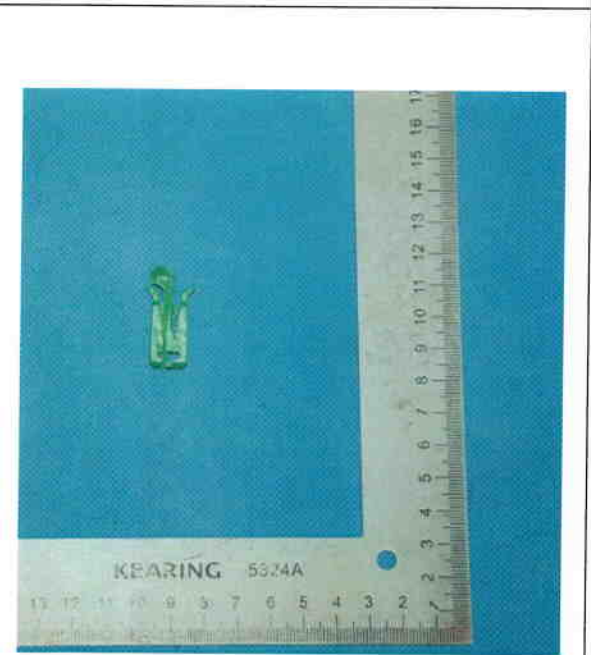
12



13



14



15



Overview:

-----THIS IS THE END OF TEST REPORT-----